



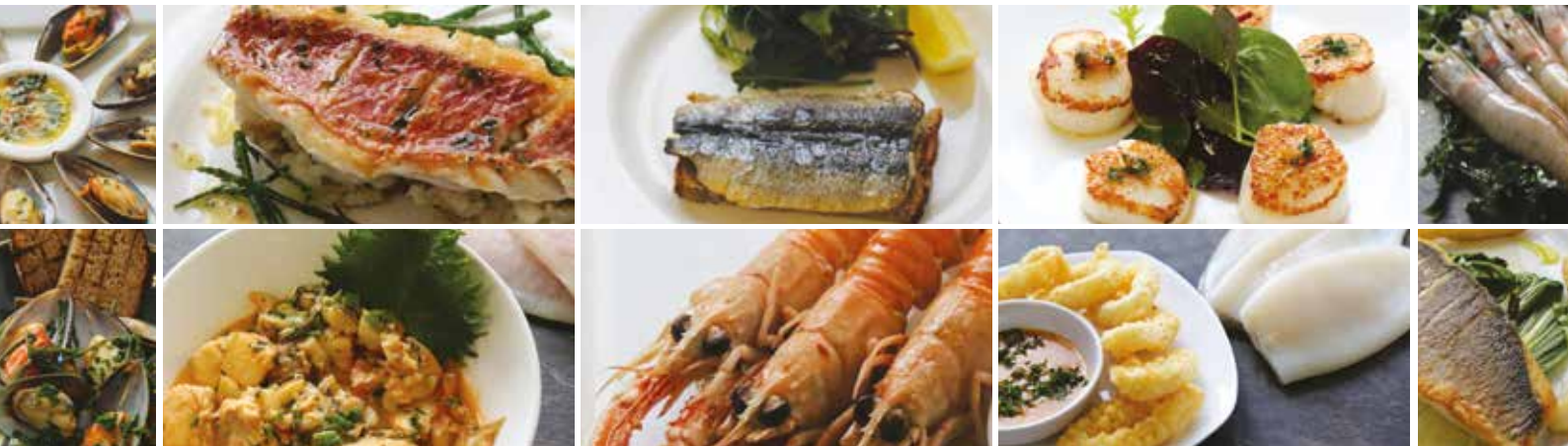
FROZEN RANGE

Product Brochure
2018

WELCOME

We are fresh fish specialists, but we also have an extensive range of coated, deli, and frozen lines. This is alongside chef essential items such as cooking wines, stocks, and sauces

This brochure showcases our Frozen Range for 2018.
For more information and prices or if you would also like a copy of our coated or specialist & deli brochure, please contact your account manager.



CONTENTS

TITLE		PAGE
White Fish	<i>Cod, Coley, Haddock, Hake, Halibut, Hoki, Lemon Sole, Plaice, Pollock, Seabass.</i>	4 - 7
Shellfish	<i>Abalone, Clams, Cockles, Crab, Crayfish, Langoustine, Scampi, Lobster, Mussel, Oyster, Prawn, Scallop, Shrimp, Whelks.</i>	8 - 14
Smoked	<i>Cod, Haddock, Halibut, Kippers, Mackerel, Tuna.</i>	15
Cephalopods	<i>Cuttlefish, Octopus, Squid.</i>	15 - 16
Game Fish & Exotics	<i>Kingfish, Mahi-Mahi, Red Snapper, Swordfish, Tuna, Yellowtail.</i>	16
Other Fish	<i>Anchovies, Barramundi, Herring, John Dory, Monkfish, Red Mullet, Salmon, Tilapia, Whitebait.</i>	17
Miscellaneous	<i>Frogs Legs, Seafood Cocktail, Snails In Garlic.</i>	17
MSC & ASC Certified Products		18 - 19



(Red Mullet)

WHITE FISH

COD

DESCRIPTION	CODE
Cod: Fillets IQF 110-140Gm (30 Per Case)	08CODI1E8W
Cod: Fillets IQF 140-170Gm (25 Per Case)	08CODI4E8R
Cod: Fillets IQF 170-200Gm (20 Per Case)	08CODI7E8N
Cod: Fillets IQF 200-230Gm (20 Per Case)	08COD20E8N
Cod: Fillets IQF 230-280Gm (15 Per Case)	08COD23E8I
Cod: Fillets IQF 280-340Gm (12 Per Case)	08COD28E8F
Cod: Black Whole (Kg)	08CODBL00K0A
Cod: Fillets Fas Skin on 230-450Gm (6.81Kg Nett Block)	08CODFA23E5U
Cod: Fillets Fas Skin on 450-909Gm (6.81Kg Nett Block)	08CODFA45E5U
Cod: Fillets Fas Skinned 230-450Gm (6.81Kg Nett Block)	08CODFAS23E5U
Cod: Fillets Fas Skinned 450-909Gm (6.81Kg Nett Block)	08CODFAS45E5U
Cod: Loin - Skinless 140-170Gm (10 Per Case)	08CODLI4E8D
Cod: Loin - Skinless 170-200Gm (10 Per Case)	08CODLI7E8D
Cod: Fillets IQF Skinned & PB 110-140Gm (30 Per Case)	08CODSKI1E8W
Cod: Fillets IQF Skinned & PB 140-170Gm (25 Per Case)	08CODSKI4E8R
Cod: Fillets IQF Skinned & PB 170-200Gm (20 Per Case)	08CODSKI7E8N
Cod: Fillets IQF Skinned & PB 200-230Gm (20 Per Case)	08CODSK20E8N
Cod: Fillets IQF Skinned & PB 230-280Gm (15 Per Case)	08CODSK23E8I
Cod: Fillets IQF Skinned & PB 280-340Gm (12 Per Case)	08CODSK28E8F
Cod: Cheeks (1Kg Nett Pack)	08CODC00E3Q

COLEY

DESCRIPTION	CODE
Coley: Fillet 140-230Gm (3.63Kg Nett Case)	08COLI4E5M
Coley: Fillet - Fas 450-900Gm (9Kg Nett Block)	08COLFA45E5X

WHITE FISH

HADDOCK

DESCRIPTION	CODE
Haddock: Fillet 110-140Gm (30 Per Case)	08HAD11E8W
Haddock: Fillet 140-170Gm (25 Per Case)	08HAD14E8R
Haddock: Fillet 170-200Gm (20 Per Case)	08HAD17E8N
Haddock: Fillet 200 - 230Gm (20 Per Case)	08HAD20E8N
Haddock: Fillet 230-280Gm (15 Per Case)	08HAD23E8I
Haddock: Fillet 280-340Gm (12 Per Case)	08HAD28E8F
Haddock: Fillet - Frozen At Sea Skin On 230-454Gm (6.8Kg Nett Block) <i>*Special order only</i>	08HADFA23E5U
Haddock: Fillet - Frozen At Sea Skin On 450-909Gm (6.81Kg Nett Block) <i>*Special order only</i>	08HADFA45E6F
Haddock: Fillet - Frozen At Sea Skinless 140-230Gm (6.8Kg Nett Block) <i>*Special order only</i>	08HADFAS14E5U
Haddock: Fillet - Frozen At Sea Skinless 230-454Gm (6.8Kg Nett Block) <i>*Special order only</i>	08HADFAS23E5U
Haddock: Fillet Skinned & Boned 110-140Gm (30 Per Case)	08HADS11E8W
Haddock: Fillet Skinned & Boned 140-170Gm (25 Per Case)	08HADS14E8R
Haddock: Fillet Skinned & Boned 170-200Gm (20 Per Case)	08HADS17E8N
Haddock: Fillet Skinned & Boned 200-230Gm (20 Per Case)	08HADS20E8N
Haddock: Fillet Skinned & Boned 230-280Gm (15 Per Case)	08HADS23E8I
Haddock: Fillet Skinned & Boned 280-340Gm (12 Per Case)	08HADS28E8F
Haddock: Loins Skinned & Boned 110 - 140Gm (30 Per Case) <i>*Special order only</i>	08HADSL11E8W

HAKE

DESCRIPTION	CODE
Hake: Fillet 140-170Gm (3.63Gm Nett Case)	08HAK14E5M
Hake: Fillet 140-170Gm (25 Per Case)	08HAK14E8R
Hake: Fillet 170-200Gm (3.63Gm Nett Case)	08HAK17E5M
Hake: Fillet 170-200Gm (10 Per Case)	08HAK17E8D
Hake: Fillet Frozen At Sea 260-400Gm (4.54Kg Nett Case)	08HAKFA25E5M
Hake: Fillet 200-230Gm (3.63Kg Nett Case)	08HAKS20E5M
Hake: Fillet 230-280Gm (3.63Kg Nett Case)	08HAKS23E5M

WHITE FISH

HALIBUT

DESCRIPTION	CODE
Halibut: Supreme - Skinless & Boned 170-230Gm (10 Per Case)	08HAL17E8D
Halibut: Supreme - Skinless & Boned 230 -280Gm (10 Per Case)	08HAL23E8D
Halibut: Steak 230-280Gm (4.08Kg Nett Case)	08HAL23E5M

HOKI

DESCRIPTION	CODE
Hoki: Fillet IQF - Skinless & Boned 110-140Gm (3.63Gm Nett Case)	08HOK11E5M
Hoki: Fillet IQF - Skinless & Boned 140-170GM (3.63Kg Nett Case)	08HOKS14E8R
Hoki: Fillet IQF - Skinless & Boned 170-220Gm (3.63Kg Nett Case)	08HOK17E5M

LEMON SOLE

DESCRIPTION	CODE
Lemon Sole: Fillet IQF 140-170Gm (25 Per Case)	08SOLL14E8R
Lemon Sole: Fillet IQF 170-200Gm (20 Per Case)	08SOLL17E8N
Lemon Sole: Fillet IQF 230-280Gm (15 Per Case)	08SOLL23E8I

PLAICE

DESCRIPTION	CODE
Plaice: Fillet IQF 140-170Gm (25 Per Case)	08PLA14E8R
Plaice: Fillet IQF 170-200Gm (20 Per Case)	08PLA17E8N
Plaice: Fillet IQF 200-230Gm (20 Per Case)	08PLA20E8N
Plaice: Fillet IQF 230-280Gm (15 Per Case)	08PLA23E8I
Plaice: Fillet IQF 280-340Gm (12 Per Case)	08PLA28E8F

WHITE FISH

POLLOCK

DESCRIPTION

CODE

Pollock: Fillet 110-140Gm Skinned & Boned (30 Per Case)	08POLI1E8W
Pollock: Fillet 140-170Gm Skinned & Boned (25 Per Case)	08POLSI4E8R
Pollock: Fillet 170-200Gm Skinned & Boned (20 Per Case)	08POLI7E8N
Pollock: Fillet 200-230Gm Skinned & Boned (20 Per Case)	08POL20E8N
Pollock: Fillet 230-280Gm Skinned & Boned (15 Per Case)	08POL23E8I

SEABASS

DESCRIPTION

CODE

Seabass: Fillet 80 - 120Gm (800Gm Nett Pack)	08BAS80E3Q
Seabass: Fillet 100-140Gm (800Gm Nett Pack)	08BAS11E3Q
Seabass: Fillet 140-180Gm (800Gm Nett Pack)	08BAS14E3Q
Seabass: Fillet 180 - 200Gm (800Gm Nett Pack)	08BAS18E3Q
Seabass: Chilean (Kg)	08BAS00K0A



(Seabass)

SHELLFISH

DESCRIPTION	CODE
Abalone: IQF (1Kg Nett Pack)	08ABA00E3Q
Clams: Meat - Baby (800Gm Nett Bag)	08CLAB00E3Q
Clams: Whole Shell (1Kg Nett Pack)	08CLAF00E3Q
Clams: Half Shell (1Kg Nett Pack)	08CLAH00E3Q
Cockles: Meat (340Gm Nett Bag)	08COC00E2K
Cockles: Meat (1Kg Nett Bag)	08COC00E3Q
Crab: Claws - Double Pincer (272Gm Nett Pack)	08CRACLD00E2K
Crab: Claws - Single Pincer (272Gm Nett Pack)	08CRACLS00E2K
Crab: Meat 50/50 (454Gm Nett Pack)	08CRAFF00E2K
Crab: Meat White (454Gm Nett Pack)	08CRAWH00E2K
Crab: Meat King - (Kilo) <i>*Special order only</i>	08CRAK00K0A
Crab: Dressed 110-140Gm (Each)	08CRADR11E0A
Crab: Dressed 140-170Gm (Each)	08CRADR14E0A
Crab: Dressed 170-200Gm (Each)	08CRADR17E0A
Crab: Snow Sections Cooked (9.08Kg Nett Case)	08CRASC00E6D
Crab: Bodies (Kg)	08CRAB00K0A
Crab: Soft Shell - Medium (24 Per Case)	08CRAS1E8Q
Crab: Soft Shell - Hotels (18 Per Case)	08CRAS2E8L
Crab: Soft Shell Prime (14 Per Case)	08CRAS3E8H
Crab: Soft Shell - Jumbo (12 Per Case)	08CRAS4E8F
Ocean Stix Premium (1Kg Nett Box)	08CRASTP00E3Q
Crayfish: Tails - Cooked & Peeled (800Gm Nett Pack)	08CRAY00E3Q
Ecrevisse: (1Kg Nett Pack)	08CRAY00K0A

SHELLFISH

DESCRIPTION

CODE

Langoustine: 4-7 (700Gm Nett Box)

08LAN4E3Q

Langoustine: 8-12 (700Gm Nett Box)

08LAN8E3Q

Langoustine: 13-16 (700Gm Nett Box)

08LAN13E3Q

Langoustine: 16-20 (700Gm Nett Box)

08LAN16E3Q

Langoustine: 21-30 (700Gm Nett Box)

08LAN21E3Q

Langoustine: Heads & Claws (Kg)

08LANH00K0A

Scampi: Peeled Gourmet 30-45 (295Gm Nett Pack)

08SCAPG30E2K

Scampi: Peeled Jumbo 20-30 (295Gm Nett Pack)

08SCAPJ20E2K



(Langoustine)

SHELLFISH

DESCRIPTION	CODE
Lobster: In Brine 350Gm Nett (Each)	08LOBLB00E2B
Lobster: Meat (320Gm Nett Pack)	08LOBM00E1X
Lobster: Claw & Knuckle Meat - Cooked (454Gm Nett Pack) <i>*Special order only</i>	08LOBMCO00E2K
Lobster: Tail - Shell On 110-170Gm (Kg)	08LOBT11K0A
Lobster: Tail - Shell On 170-230Gm (Kg)	08LOBT17K0A
Lobster: Whole Cooked 340-440Gm (Kg)	08LOBW34K05
Lobster: Bodies DOA - Native UK (Kg)	08LOBB00K0A
Lobster: Bodies DOA - Canada & USA (Kg)	08LOBBC00K0A
Lobster: Raw Slipper - Half Cut Cleaned - 50-70Gm (1Kg Nett Pack)	08LOBRPW00E3Q
Mussel: Whole Shell (1Kg Nett Pack)	08MUSBL00E3Q
Mussel: Green Lip Half Shell (1Kg Nett Pack)	08MUSHN00E3Q
Mussel: Meat (340Gm Nett Bag)	08MUSM00E2K
Mussel: Meat (900Gm Nett Bag)	08MUSM00E3Q
Mussel: Moules Marinieres (450Gm Nett Pack)	08MUSMM00E2J



(Green Lip Mussels)

SHELLFISH

DESCRIPTION	CODE
Prawn: King - BAP - Tail On - Cooked & Peeled 26-30 (700Gm Nett Bag)	08PRACBPBP26E3Q
Prawn: King - BAP - Tail On - Cooked & Peeled 31-40 (700Gm Nett Bag)	08PRACBPBP31E3Q
Prawn: King - BAP - Tail Off - Cooked & Peeled 31-40 (700Gm Nett Bag)	08PRACPOBP31E3Q
Prawn: King - BAP - Raw Peeled & Deveined 21-25 IQF (700Gm Nett Pack)	08PRADVBP21E3Q
Prawn: King - BAP - Raw Deveined - Tail On - IQF 21-25 (700Gm Nett Pack)	08PRADVVPF21E3Q
Prawn:Vannamei - Raw Peeled & Deveined 31-40 (900Gm Nett Block)	08PRADVBTB31E3M
Prawn:Vannamei - Shell On - Raw - Headless 26-30 (900Gm Nett Block)	08PRAHLB26E3M
Prawn:Vannamei - Shell On - Raw - Headless 31-40 (900Gm Nett Block)	08PRAHLB31E3M
Prawn: Black Tiger - BAP - Head On - Raw 4-6 (600Gm Nett Box) <i>*Extensively farmed in Vietnam</i>	08PRAHOBP4E3Q
Prawn: Black Tiger - BAP - Head On - Raw 6-8 (600Gm Nett Box) <i>*Extensively farmed in Vietnam</i>	08PRAHOBP6E3Q
Prawn: Black Tiger - BAP - Head On - Raw 8-12 (600Gm Nett Box)	08PRAHOBP8E3Q
Prawn: Black Tiger - BAP - Head On - Raw 13-15 (600Gm Nett Box)	08PRAHOBP13E3Q
Prawn: Black Tiger - BAP - Head On - Raw 16-20 (600Gm Nett Box)	08PRAHOBP16E3Q
Prawn: Black Tiger - BAP - Head On - Raw 21-30 (600Gm Nett Box)	08PRAHOBP21E3Q



SHELLFISH

DESCRIPTION	CODE
Prawn: King - Headless - Shell On - Raw 13-15 IQF (440Gm Nett Bag)	08PRAKRH13E3K
Prawn: King - Headless - Shell On - Raw 16-20 IQF (440Gm Nett Bag)	08PRAKRH16E3K
Prawn: King - Headless - Shell On - Raw U5 IQF (440Gm Nett Pack)	08PRAKRH5E3K
Prawn: King - Headless - Shell On - Raw 6-8 IQF (440Gm Nett Bag)	08PRAKRH6E3K
Prawn: King - Headless - Shell On - Raw 8-12 IQF (440Gm Nett Bag)	08PRAKRH8E3K
Prawn: King - Cooked Head & Shell On 10-20 Per Kg (2Kg Nett Pack)	08PRAMED10113
Prawn: King - Cooked Head & Shell On 40-60 Per Kg (1.80Kg Nett Pack)	08PRAMED40113
Prawn: King - Cooked Head & Shell On 40-60 Per Kg (900Gm Nett Pack)	08PRAMED140113
Prawn: King - Cooked Head & Shell On 20-30 Per Kg (1.80Kg Nett Pack)	08PRAMED20113
Prawn: King - Cooked Head & Shell On 20-30 Per Kg (900Gm Nett Pack)	08PRAMED21113
Prawn: King - Cooked Head & Shell On 30-40 Per Kg (1.80Kg Nett Pack)	08PRAMED30113
Prawn: King - Cooked Head & Shell On 30-40 Per Kg (900Gm Nett Pack)	08PRAMED31113
Prawn: King - BAP - IQF Raw Peeled Butterfly 21-25 (810Gm Nett Bag)	08PRARPBB21E3M
Prawn: King - BAP - Tail On - Raw Peeled & Deveined 16-20 (700Gm Nett)	08PRARPDTO16E2Y
Prawn: BAP - King Skewers - Raw (700Gm Nett Pack)	08PRASKBP60E3Q
Prawn: King - BAP - Raw Peeled & Deveined 8-12 (700Gm Nett Pack)	08PRDV0124
Prawn: King - BAP - Raw Peeled & Deveined 13-15 (700Gm Nett Pack)	08PRDVKV00124
Prawn: King - BAP - Raw Peeled & Deveined 16-20 (700Gm Nett Pack)	08PRDVKV10124
Prawn: King - BAP - Raw Peeled & Deveined 26-30 (700Gm Nett Pack)	08PRDVKV20124A
Prawn: King - BAP - Raw Peeled & Deveined 31-40 (700Gm Nett Pack)	08PRDVKV30124
Prawn: King - BAP - Raw Peeled & Deveined 41-50 (700Gm Nett Pack)	08PRDVKV40124
Prawn: King - Headless - Shell On & Raw F/Water U5 (700Gm Nett Block)	08PRHLB10224
Prawn: King - Headless - Shell On & Raw F/Water 6-8 (700Gm Nett Block)	08PRHLB20224
Prawn: King - Headless - Shell On & Raw F/Water 21-25 (800Gm Nett Block)	08PRHLB60224
Prawn: King - Headless - Shell On & Raw SeaWater 26-30 (900Gm Nett Block)	08PRHLBS30224
Prawn: King - Head On - Shell On - Raw 4-6 (600Gm Nett Box)	08PRHO4E2R
Prawn: King - Head On - Shell On - Raw 8-12 (600Gm Nett Box)	08PRHO30224

SHELLFISH

DESCRIPTION	CODE
Prawn: King - Head On - Shell On - Raw 13-15 (600Gm Nett Box)	08PRHO40224
Prawn: King - Head On - Shell On - Raw 16-20 (600Gm Nett Box)	08PRHO50224
Prawn: King - Head On - Shell On - Raw 21-30 (600Gm Nett Box)	08PRHO60224
Prawn: King - Head On - Shell On - Raw 31-40 (600Gm Nett Box)	08PRHO70224
Prawn: Sicilian Red - Whole No 1 20-25 (1Kg Nett Tray) <i>*Special order only</i>	08PRASIHO1E3Q
Prawn: Sicilian Red - Whole No 2 30-35 (1Kg Nett Tray) <i>*Special order only</i>	08PRASIHO2E3Q
Prawn: Sicilian Red - Whole No 3 50-65 (1Kg Nett Tray) <i>*Special order only</i>	08PRASIHO3E3Q
Prawn: North Atlantic 100-200 (1.3Kg Nett Bag)	08PRABULK0203
Prawn: North Atlantic 250-350 (1.16Kg Nett Bag)	08PRABULK30203
Prawn: North Atlantic 150-250 - Luxury (2.2Kg Nett Bag)	08PRALG02150
Prawn: Carabinero Red U10 (800Gm Nett Weight)	08PRARCI0E0A
Prawn: Royal Greenland 444 175-275 (1.80Kg Nett Bag)	08PRARG17E4I
Prawn: Royal Greenland 446 125-175 (1.80Kg Nett Bag)	08PRARG12E4I
Prawn: Royal Greenland 448 95-125 (1.80Kg Nett Bag)	08PRARG95E4I
Prawn:Argentinian Red Butterfly Marinated 10-20 (500Gm Nett Pack)	08PRARBPW00E2N
Prawn:Argentinian Pink 10-20 (2Kg Nett Pack)	08PRAWA10E4I
Prawn:Argentinian Pink 20-30 (2Kg Nett Pack)	08PRAWA00E4I
Prawn:Whole - Mazzancolle 10-15 (1Kg Nett Pack) <i>*Special order only</i>	08PRAMZHO10E3Q
Prawn:Whole - Mazzancolle 20-30 (1Kg Nett Pack) <i>*Special order only</i>	08PRAMZHO20E3Q
Prawn:Whole - Mazzancolle 30-40 (1Kg Nett Pack) <i>*Special order only</i>	08PRAMZHO35E3Q
Prawn: Mediterranean Rose 65-75 (1Kg Nett Pack) <i>*Special order only</i>	08PRARO65E3Q
Prawn: Mediterranean Rose 90-100 (1Kg Nett Pack) <i>*Special order only</i>	08PRARO90E3Q
Prawn: Mediterranean Rose Tartare (80Gm Nett Pack) <i>*Special order only</i>	08PRAROT00E0Q
Prawn: Shell On 90-120+-Cooked (5Kg Nett Case)	08PRASHONI10103
Shrimp: Raw - Head On Shell On 30-40 (2Kg Block)	08SHRHOB30E4I

SHELLFISH

DESCRIPTION	CODE
Oyster: Meat (850Gm Nett Pack)	08OYSM00E3Q
Scallop: King Roe On (550Gm Nett Bag)	08SCAKJ00E3Q
Scallop: Queen (600Gm Nett Bag)	08SCAQ40E0A
Scallop: Queen - Half Shell (10 Per Bag)	08SCAQH00E8D
Scallop: Meat - Roeless 10-20 (700Gm Nett Pack)	08SCARI0E3Q
Shrimp: Brown Peeled (363Gm Nett Pack)	08SHRPB00E2K
Shrimp: Potted (50Gm Nett Tub)	08SHRPB00E0I
Whelks: Meat IQF (1Kg Nett Pack)	08WHE00E3Q



(Scallops)

SMOKED

DESCRIPTION	CODE
Cod: Smoked Roe (Kg)	08CODSR00K0A
Haddock: Offcuts Natural Smoked (1Kg Nett Pack)	08HADOWR00E3Q
Haddock: Fillet - Natural Smoked (3Kg Nett Case)	08HADS00E4Y
Haddock: Fillet - Natural Smoked (Kg)	08HADS00K0A
Haddock: Fillet - Smoked - Dyed Yellow (3Kg Nett Case)	08HADSY00E4Y
Smokies: Haddock (3.18Kg Nett Case)	08HADA00E4Z
Halibut: Smoked - Sliced (200Gm Nett Pack)	08HALS00EIF
Halibut: Smoked - Sliced Sides (Kg Nett)	08HALS00K0A
Kippers: Fillets (3kg Nett Case)	08KIP00E4Z
Kippers: Manx (3kg Nett Case)	08KIPM00E4V
Kippers: Whole (3Kg Nett Case)	08KIPW00E4Z
Mackerel: Fillet - Smoked - 120/160Gm (18 Packs)	08MACS12E8L
Mackerel: Fillet - Smoked - Peppered - 120/160Gm (18 Packs)	08MACSP12E8L
Tuna: Fillet - Smoked (200Gm Nett Pack)	08TUNS00EIF

CEPHALOPODS

DESCRIPTION	CODE
Cuttlefish: Whole 1-2Kg (Kg)	08CUT1K0A
Cuttlefish: Baby - Cleaned 41-60 (800Gm Nett Pack)	08CUTBC41K0A
Octopus - Baby 20-40 (800Gm Nett Bag)	08OCTB20K0A
Octopus - Baby 41-60 (800Gm Nett Bag)	08OCTB41K0A
Octopus: 1-2Kg (Kg)	08OCTP1K0A
Octopus: 2-3Kg (Kg)	08OCTP2K0A
Octopus: 3-4Kg (Kg)	08OCTP3K0A

CEPHALOPODS

DESCRIPTION	CODE
Squid: Baby (454Gm Nett Pack)	08SQUB00E2K
Squid: Micro Chipperones (386Gm Nett Pack)	08SQUC00E2N
Squid: Micro Chipperones (800Gm Nett Pack)	08SQUC00E3Q
Squid: Cleaned With Tentacles 10-20 (800Gm Nett Bag)	08SQUCPF10E3Q
Squid: Cleaned With Tentacles 20-40 (800Gm Nett Bag)	08SQUCPF20E3Q
Squid: Whole Cleaned With Tentacles 10-20 Vietnamese (900Gm Nett Pack)	08SQUCV10E3Q
Squid: Whole Cleaned With Tentacles 20-40 Vietnamese (900Gm Nett Pack)	08SQUCV20E3Q
Squid: Rings Unbattered (700Gm Nett Bag)	08SQUR00E3Q
Squid: Steak 110-140Gm (800Gm Nett Pack)	08SQUSTPF00E3Q
Squid: Tubes U5 (700Gm Nett Bag)	08SQUT5E3Q
Squid: Whole California 10-14Cm (1Kg Nett Pack)	08SQUWC10E3Q

GAME FISH & EXOTICS

DESCRIPTION	CODE
Kingfish: Portion 170-230Gm (4.50Kg Nett Case)	08KINFST17E5R
Mahi-Mahi: Fillet 170-200Gm (900Gm Nett Pack)	08MAHI7E3Q
Mahi-Mahi: Portion 160-180Gm (4Kg Nett Case)	08MAHP16E5R
Red Snapper: Portion 170-200Gm (20 Per Case)	08SNARI7E8N
Red Snapper: Fillet 300-500Gm (Kg)	08SNAR30K0A
Swordfish: Supreme 170-220Gm (10 Per Case)	08SWOI7E8D
Swordfish: Supreme 220-280Gm (10 Per Case)	08SWOL23E8D
Tuna: Loin Supreme 140-170Gm (10 Per Case)	08TUNSUI4E8D
Tuna: Loin Supreme 170-200Gm (10 Per Case)	08TUNST17E8D
Tuna: Loin Supreme 230-280Gm (10 Per Case)	08TUNST23E8D
Yellowtail Kingfish: Hamachi Fillet (Kg)	08KINHA00K0A
Yellowtail Kingfish: Hiramasa Fillet (Kg)	08KINH100K0A

OTHER FISH

DESCRIPTION	CODE
Anchovies 1Kg Nett Pack (Each)	08ANCO0E3Q
Barramundi: Fillets 500-800Gm (Kg)	08BAR50K0A
Herring: Milts (2.27Kg Nett Pack)	08HERM00E4L
John Dory: Fillet 115-170Gm (900Gm Nett Pack) <i>*Special order only</i>	08JOHI1E3Q
Monkfish: Fillet IQF (800Gm Nett Pack)	08MON00E3Q
Monkfish: Fillet 400-600Gm Stargazer (5Kg Nett Box)	08MONST40E5R
Pie Mix: Whitefish - Skinless & Boneless (Kg)	08MIXP00K0A
Red Mullet: Whole U5 (900Gm Nett)	08MULR5K0A
Red Mullet: Whole U7 (900Gm Nett)	08MULR7K0A
Red Mullet: Fillets 40-80Gm (800Gm Nett Bag)	08MULR40E3Q
Red Mullet: Fillets 80-120Gm (800Gm Nett Bag)	08MULR80E3Q
Salmon: Supreme 140/170Gm - Descaled Boneless - Vac Pack (20 Per Case)	08SALA140E8D
Salmon: Supreme 170/200Gm - Descaled Boneless - Vac Pack (20 Per Case)	08SALSUA17E0A
Salmon: Pieces Skinned & Boned (1Kg Nett Pack)	08SALPA00E3Q
Sardine: Fillet (850Gm Nett Bag)	08SAR00E3Q
Sardine: Whole (900Gm Nett Bag)	08SARW00E3Q
Tilapia: Fillet 140-200Gm (800Gm Nett Bag)	08TILR14E3Q
Whitebait: IQF Paramount (454Gm Nett Pack)	08WHIBAPA00E2K

MISCELLANEOUS

DESCRIPTION	CODE
Frogs Legs (1Kg Nett Pack)	08FRO00E3Q
Seafood Cocktail (800Gm Nett Bag)	08SEAC00E3Q
Snails In Garlic (12 Snails Per Tray)	08SNAGA00E8F

CERTIFIED PRODUCTS

MSC

The Marine Stewardship Council (MSC) meets best practice guidelines for eco-labeling and certification to ensure it offers the world's leading certification program for sustainable wild-capture seafood. By choosing our bluefish labelled products you can be sure it comes from a sustainable fishery that has met the MSC's, Fisheries Standard.

DESCRIPTION	CODE
MSC-Cod: Loin 170-200Gm Skinless & Boneless (10 Per Case)	16CODLAS17E8D
MSC-Cod: Tail 140-170Gm (25 Per Case)	16CODTA14E8R
MSC-Cod: Tail 170-200Gm (20 Per Case)	16CODTA17E8N
MSC-Cod: Tail 140-170Gm Skinless & Boneless (25 Per Case)	16CODTAS14E8R
MSC-Cod: Tail 170-200Gm Skinless & Boneless (20 Per Case)	16CODTAS17E8N
MSC-Cod: Tail 170-200Gm Skinned & Boned (25 Per Case)	16CODTAS17E8R
MSC-Cod: Tail 200-230Gm Skinned & Boned (20 Per Case)	16CODTAS20E8N
MSC-Haddock: IQF 170-200Gm (20 Per Case)	16HAD17E8N
MSC-Haddock: IQF 200-230Gm Skinless (18 Per Case)	16HADS20E8L
MSC-Haddock: IQF 280-340Gm Skinless (12 Per Case)	16HADS28E8L
MSC-Haddock: Tail 140-170Gm Skin On & Boneless (25 Per Case)	16HADT14E8R
MSC-Haddock: Tail 140-170Gm Skinless & Boneless (25 Per Case)	16HADTS14E8R
MSC-Haddock: Tail 170-200Gm Skinless & Boneless (20 Per Case)	16HADTS17E8N
MSC-Hake: Fillet Skinned & Boneless 140-170Gm (25 Per Case)	16HAKS14E8R
MSC-Hake: Fillet Skinned & Boneless 170-200Gm (20 Per Case)	16HAKS17E8N
MSC-Hoki: Fillet - Skinned & Boned 110-170Gm (3.63Kg Nett Case)	16HOKI1E5M
MSC-Hoki: Fillet - Skinned & Boned 170-230Gm (3.63Gm Nett Case)	16HOKI17E5M
MSC-Pollock: Fillet 110-140Gm (30 Per Pack)	16POLSI1E5R
MSC-Pollock: Fillet 140-170Gm (25 Per Pack)	16POLSI4E8R
MSC-Pollock: Fillet 170-200Gm (20 Per Pack)	16POLSI7E8N
MSC-Pollock: Fillet 230-280Gm (15 Per Pack)	16POLS23E8I

CERTIFIED PRODUCTS

DESCRIPTION	CODE
MSC-Prawn: Single Frozen 125-175 - Ocean Catch (1.80Kg Nett Bag)	I6PRARGMS12E4I
MSC-Prawn: Single Frozen 175-275 - Ocean Catch (1.80Kg Nett Bag)	I6PRARGMS17E4I
MSC-Prawn: Royal Greenland 444 175-275 (1.80Kg Nett Bag)	I6PRARGI7E4I
MSC-Prawn: Royal Greenland 446 125-175 (1.80Kg Nett Bag)	I6PRARGI2E4I
MSC-Prawn: Royal Greenland 448 95-125 (1.80Kg Nett Bag)	I6PRARG95E4I
MSC-Sardine:Whole (900Gm Nett Bag)	I6SARW00E3Q
MSC-Scallop: Meat - Roeless 10-20 (700Gm Nett Pack)	I6SCACLI0E3Q
MSC-Scallop: Meat - Roeless Luxury - 10-20 (900Gm Nett Pack)	I6SCACL20E3Q

ASC

The Aquaculture Stewardship Council (ASC) operates a certification and labelling program based around scientifically robust and globally credible standards that assess whether fish farms are operating responsibly. Seafood products that carry the ASC logo are fully traceable to farms that have been independently certified to the ASC standard via Chain of Custody certification. We are working with the Aquaculture Stewardship Council (ASC) to list many more ASC certified lines over the coming months.

DESCRIPTION	CODE
ASC-Pangasius: Fillet 140-170Gm (800Gm Nett Pack)	I9PAN14E3Q
ASC-Pangasius: Fillet 180-220Gm (800Gm Nett Pack)	I9PAN18E3Q
ASC-Prawn: King - Head On - Shell On 20-30 (600Gm Nett Pack)	I9PRHO20E2R




Get In Touch

Whatever your preferred method of contact, we are here to help.

Tel: 01253 774100

Email: sales@nevefleetwood.co.uk

 [neve_fleetwood](https://www.instagram.com/neve_fleetwood)  [@Neve_Fleetwood](https://twitter.com/Neve_Fleetwood)  www.facebook.com/nevefleetwood
Youtube: Neve Fleetwood

Manage your account online and try our new  FreshFoodHub App.
Please click on the website link to register.

www.nevefleetwood.co.uk

